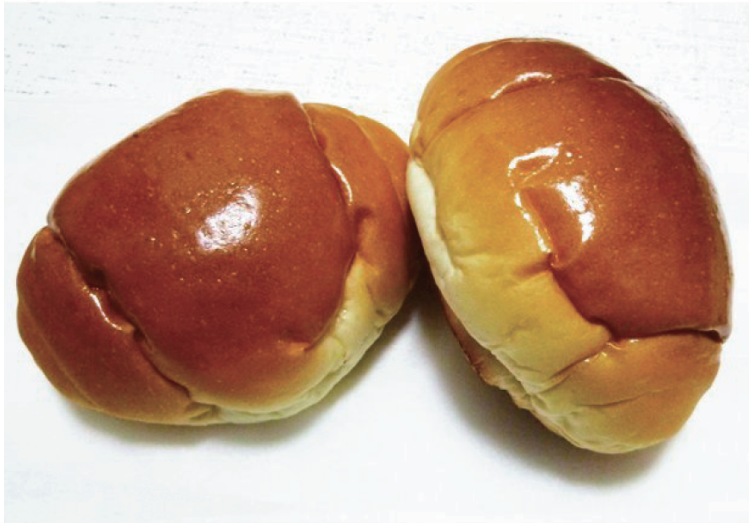






Japanese Butter-roll Crescent Molder Full-model Changed!



Difference with former model

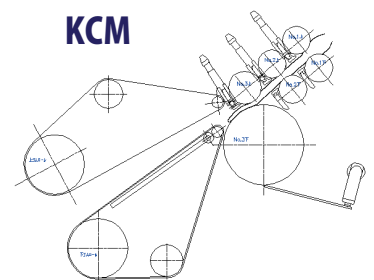
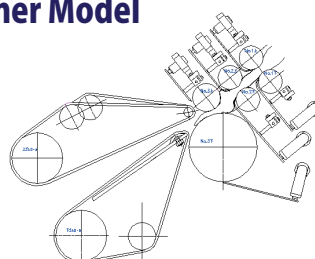
- | | |
|--|--|
|  Frame | ➔ Exterior is made with SUS and Aluminum!
Hygienic and paintless! |
|  Sheeting Roll | ➔ No chain and sprocket!
Produced by working each roller by each motor. |
|  Scraper | ➔ With resin, less wireout.
It is easy to set on and dispart! |
|  Belt | ➔ Type without meandering.
Durability is improved!
Meanderless Inserting belt. |

KCM Crescent Molder

By exterior with SUS, Aluminum, there is no anxiety with painting peeled!
By running with 8 each motor, less noisy, more hygienic!
It is easy to clean and do maintenance, work safely!



Former Model



By openable cover,
it is easy to clean and do
maintenance!

Less pressure with dough!

KCM



KAMATA MACHINERY WORKS CO.,LTD Hidaka Plant / Sales Dept.
 POST 350-1205 746 Harajuku, Hidaka-shi, SAITAMA
 TEL +81-42-984-1261 FAX +81-42-978-6683 URL <http://www.kamata-machine.co.jp>